

The Partnership

id.DRIVE is an **open public-private partnership** fostering research on vaccines and infectious diseases.

Participation is flexible, allowing partners to join or opt out based on their evidence-generation needs and strategic priorities.



Publications

Durability of the BNT162b2 XBB:1.5-adapted vaccine against JN.1 hospitalisation in Europe. Volkman HR *et al.*, 2024. *PLOS One*

Precautionary health behaviours as potential confounders in COVID-19 vaccine effectiveness studies. Wyndham-Thomas C *et al.*, 2025. *Vaccines*

Vaccine effectiveness of JCOVDEN single-dose against COVID-19 hospitalisation in Europe. Wyndham-Thomas C *et al.*, 2025. *Journal of Infection and Public Health*

Effectiveness of the AZD1222 vaccine against COVID-19 hospitalization in Europe. de Munter L *et al.*, 2024. *European Journal of Public Health*

Effectiveness of the BNT162b2 XBB.1.5-adapted vaccine against COVID-19 hospitalization related to the JN.1 variant in Europe. Nguyen JL *et al.*, 2025. *eClinicalMedicine*

Protection against COVID-19 hospitalisation conferred by primary-series vaccination with AZD1222 in non-boosted individuals. Meeraus W *et al.*, 2023. *The Lancet Regional Health - Europe*

Contact Us

Email
info@iddrive.eu

Website
www.iddrive.eu



Kaatje Bollaerts, PhD
Principal Investigator
kaatje.bollaerts@p-95.com



Toni Carmona, PhD
Principal Project Manager
toni.carmona@p-95.com



Griet Rebry, MSc
Principal Project Manager
griet.rebry@p-95.com



Leonie de Munter, PhD
Senior Epidemiologist
leonie.demunter@p-95.com



Katherine Newell, PhD
Senior Epidemiologist
katherine.newell@p-95.com

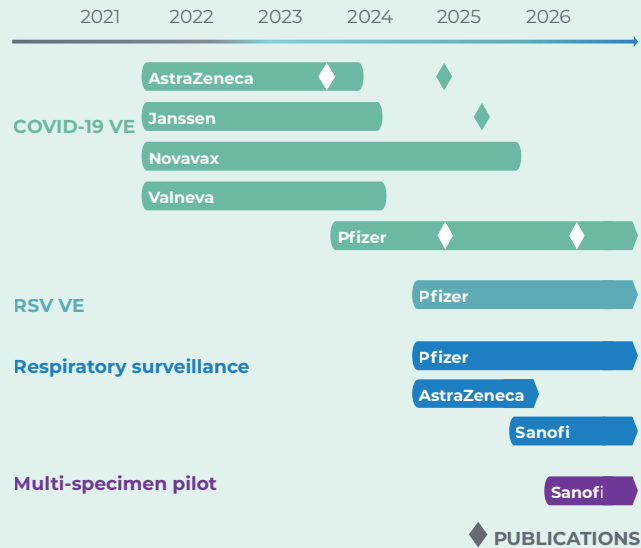
id.DRIVE

An open public-private partnership for infectious disease studies on vaccines, burden of disease and therapeutics in Europe and beyond



*Driving Large Sample Sizes | Cost Sharing |
Pandemic Preparedness | Strong Teams |
Sustainable Capacity*

Studies



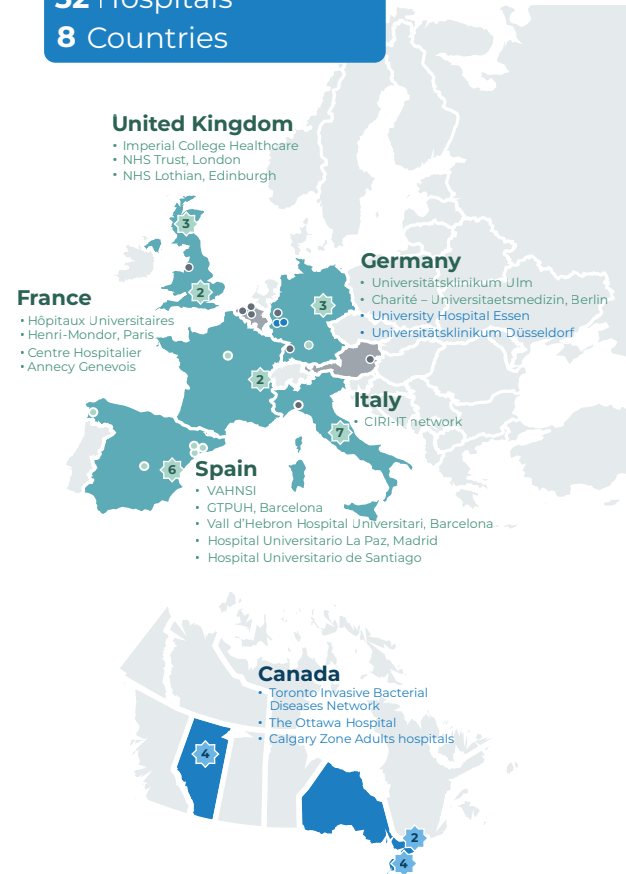
Scope of Studies

Observational and low-interventional studies on vaccines, related preventive measures, therapeutic and diagnostics for infectious diseases

- Surveillance, burden of disease & health care resource utilisation
- Effectiveness studies
- Impact of prevention programs
- Safety studies

Site Network

26 Study Contributors
52 Hospitals
8 Countries



Site network can be expanded to other regions on demand

Data Collection



Population

- Adults (18y+)
- 1 overnight hospital stay
- Informed Consent
- + Severe Acute Respiratory Infection (**SARI**)



Laboratory testing

- Respiratory specimen collection
- Viral respiratory PCR multiplex panel: **SARS-CoV2*, Influenza A (H1, H3) and B*, RSV A and B*, hMPV, HRV, HEV, Parainfluenza 1-4, Adenovirus, Human bocavirus 1-4, Human coronavirus (229E/NL63/ OC43/KU1)**

*Pathogens tested at all sites at minimum



Variables

- Demographics and risk factors
- Hospital outcomes (intensive care unit admission, respiratory support, in-hospital mortality)
- Laboratory results & vaccination data

Recruitment

Apr 2021 – Apr 2026

35,470
SARI patients



Additional data collection can be developed upon request

Cost Sharing Model

Partners will share the data collection costs proportionally, based on their individual study requirements